



Final conference EESSI PROGRESS Czech Republic

Prague, 14 May 2012

Ondřej Církva



People first ...



Agenda

- 1/ Institutions in the project**
- 2/ National EESSI architecture
- 3/ Technical solution CSSA
- 4/ AP CSSA project
- 5/ What was useful?
- 6/ National recommendations



Institutions in the project

Czech Social Security Administration (CSSA)

- Pensions
- Sickness benefits in cash
- Legislation applicable
- Recovery

National Training Fund

- Project administration
- Senior expert from the Centre for International Reimbursements (CMU) - Sickness benefits in kind

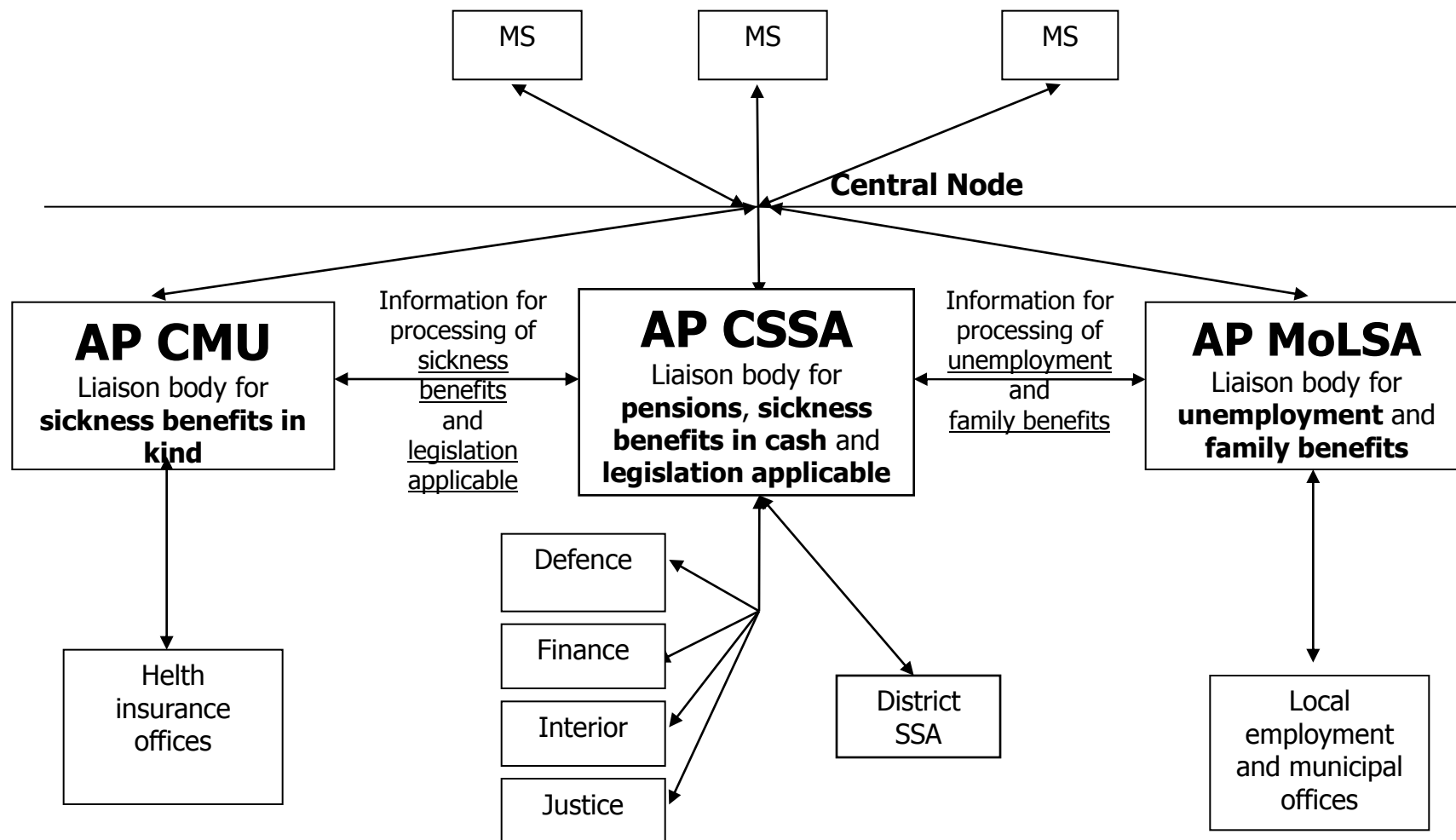


Agenda

- 1/ Institutions in the project
- 2/ National EESSI architecture**
- 3/ Technical solution CSSA
- 4/ AP CSSA project
- 5/ What was useful?
- 6/ National recommendations

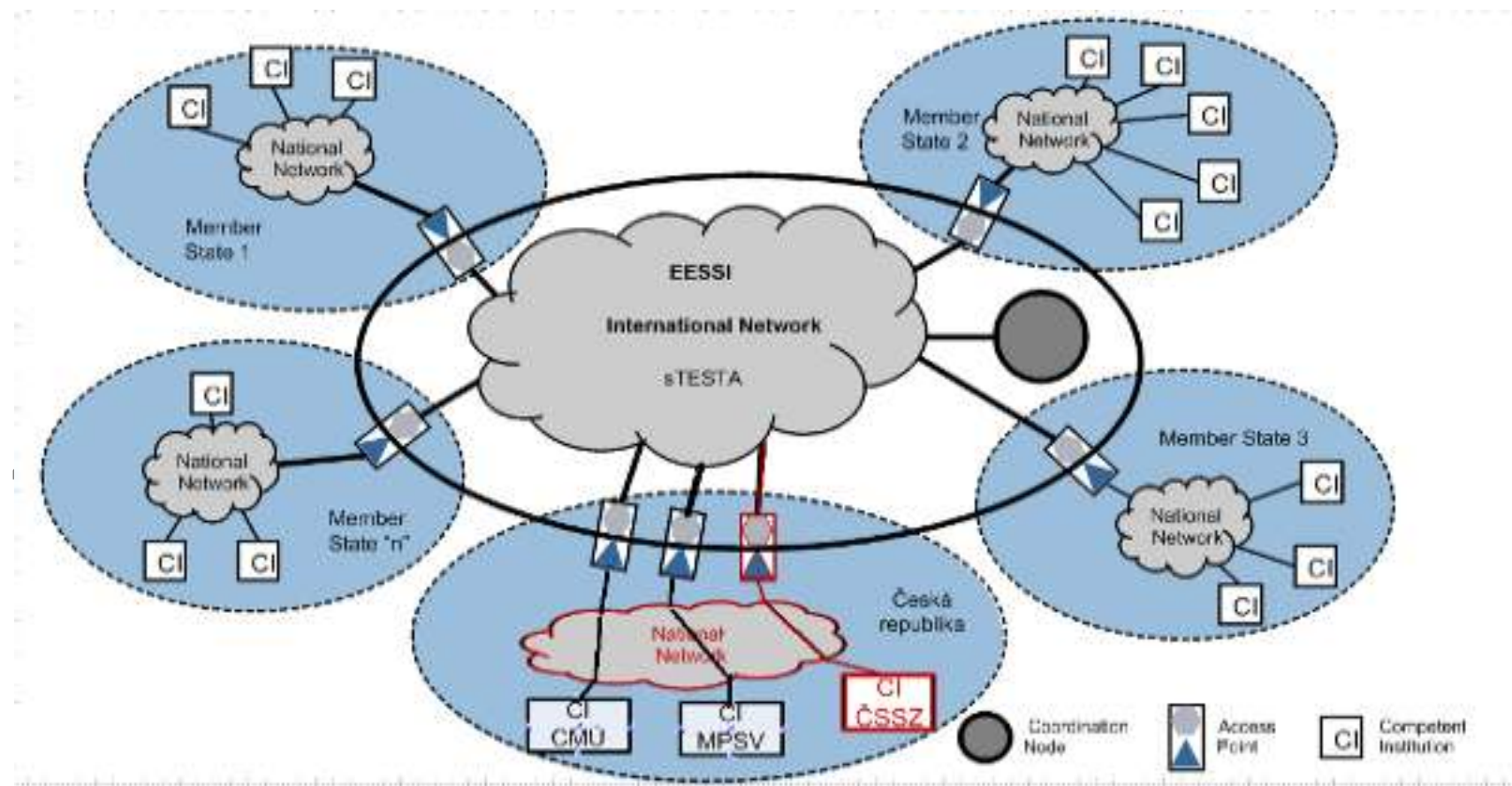


National EESSI architecture (1)





National EESSI architecture (2)





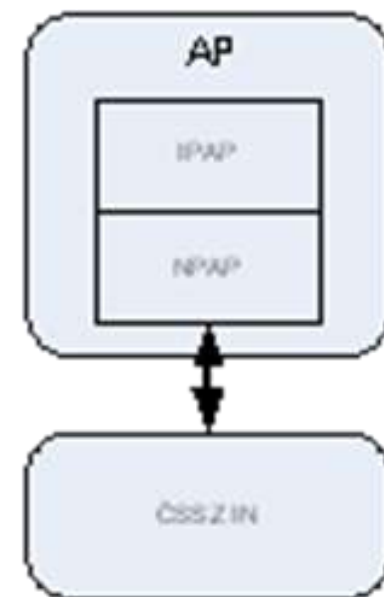
Agenda

- 1/ Institutions in the project
- 2/ National EESSI architecture
- 3/ Technical solution CSSA**
- 4/ AP CSSA project
- 5/ What was useful?
- 6/ National recommendations



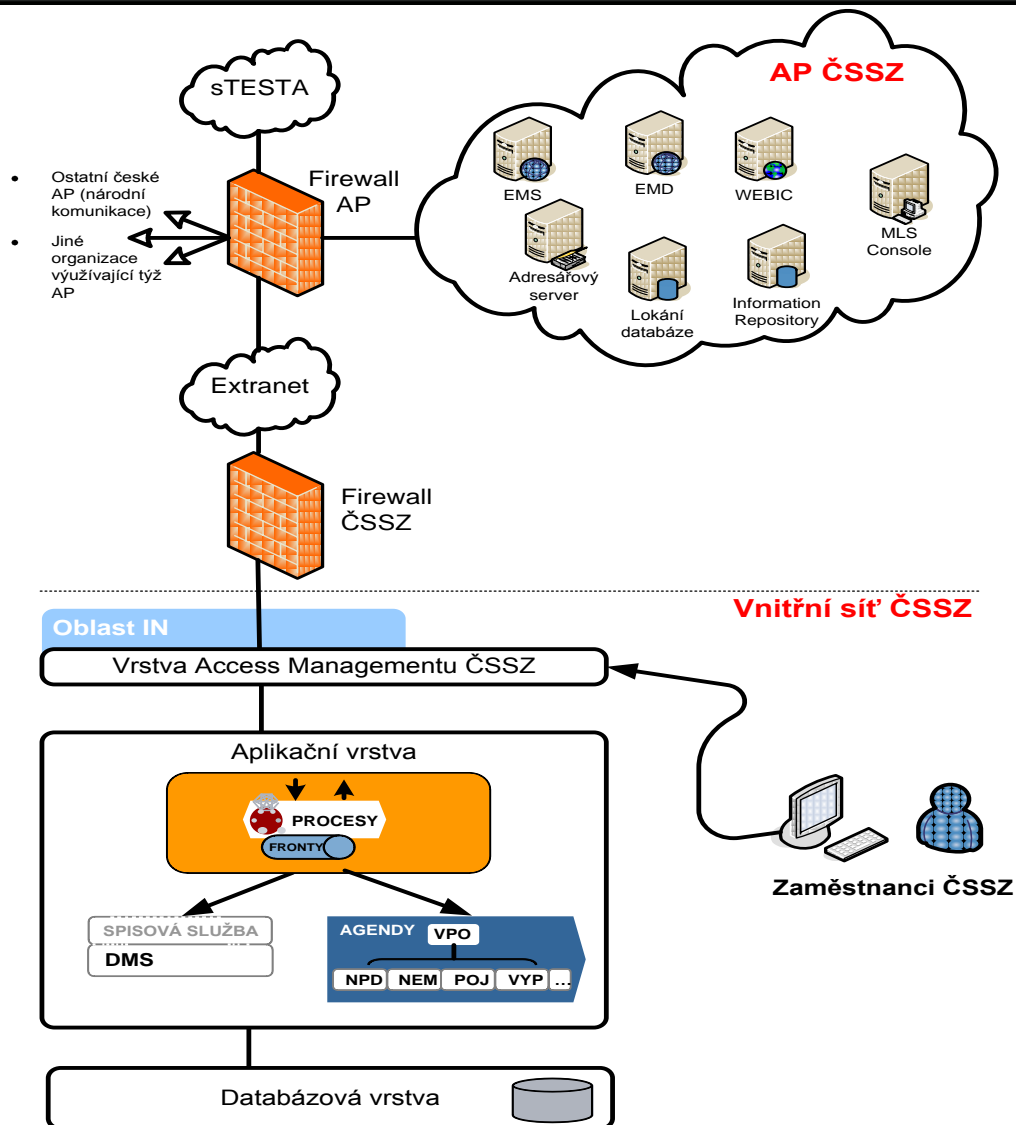
Technical solution CSSA (1)

- **AP (IPAP, NPAP)**
 - Reference implementation
 - Webic for minor sector (sickness in cash)
 - ICD3 or ICD5
 - General processes and routing
- **CSSZ IN**
 - Internal processes
 - Completion of SEDs (lifecycle)





Technical solution CSSA (2)





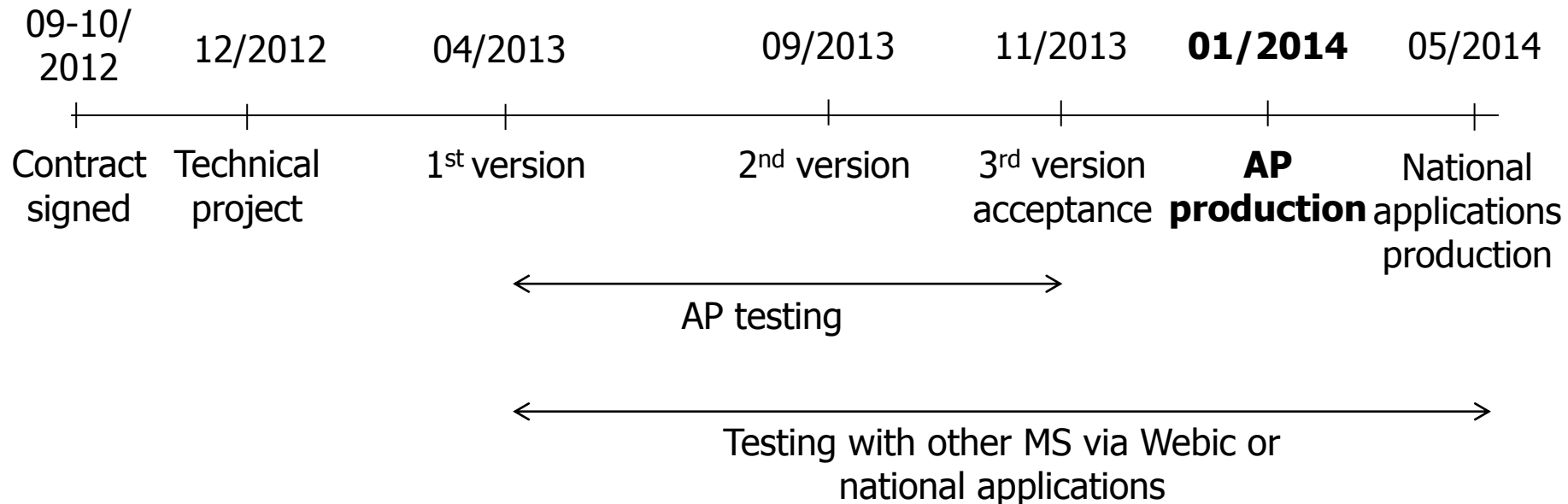
Agenda

- 1/ Institutions in the project
- 2/ National EESSI architecture
- 3/ Technical solution CSSA
- 4/ AP CSSA project**
- 5/ What was useful?
- 6/ National recommendations



AP CSSA project

- Common project with the MoLSA (2 Czech APs)
- Financed from EU funds
- Current status – new call for tender published
- Timeline





Agenda

- 1/ Institutions in the project**
- 2/ National EESSI architecture**
- 3/ Technical solution CSSA**
- 4/ AP CSSA project**
- 5/ What was useful?**
- 6/ National recommendations**



What was useful?

- Detailed discussion about national solution in each partner MS
- Personal contact with specialists from other MS as a basis for a closer cooperation
- Common conclusions and recommendations to each MS and Commission for searching better solutions



Agenda

- 1/ Institutions in the project**
- 2/ National EESSI architecture**
- 3/ Technical solution CSSA**
- 4/ AP CSSA project**
- 5/ What was useful?**
- 6/ National recommendations**



National recommendations

- Find an own partner for testing or become partner of some testing countries when all the preparatory works are already settled. **DONE**
- Establish special group for data security and identification of persons – horizontal group. **DONE**
- Establish contact e-mail box for EESSI SPOC and AP SPOC that will be available for a predetermined group of experts. **DONE**



Thank you for your attention